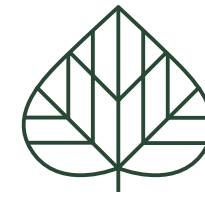




9TH & MAIN

CONDOS + TOWNS



9TH & MAIN

CONDOS + TOWNS

LUXURY & NATURE

In Stouffville, you can enjoy a mix of urban amenities and lush nature, where the best of both worlds is at your fingertips. At 9th & Main, a range of dining, shopping, and entertainment surrounds your luxurious condominium and townhome community. Thoughtfully designed to be as functional as it is fabulous, each spacious suite is built to elevate your modern lifestyle.







RELAX & REJUVENATE

Warm up by the fireplace or relax on the outdoor terrace. Get energized in the state-of-the-art fitness centre and yoga studio. Invite loved ones to unwind in your stunning party room, play virtual golf, and let the kids enjoy the playroom. Dictate your days and design your lifestyle with an array of fantastic amenities at 9th & Main.

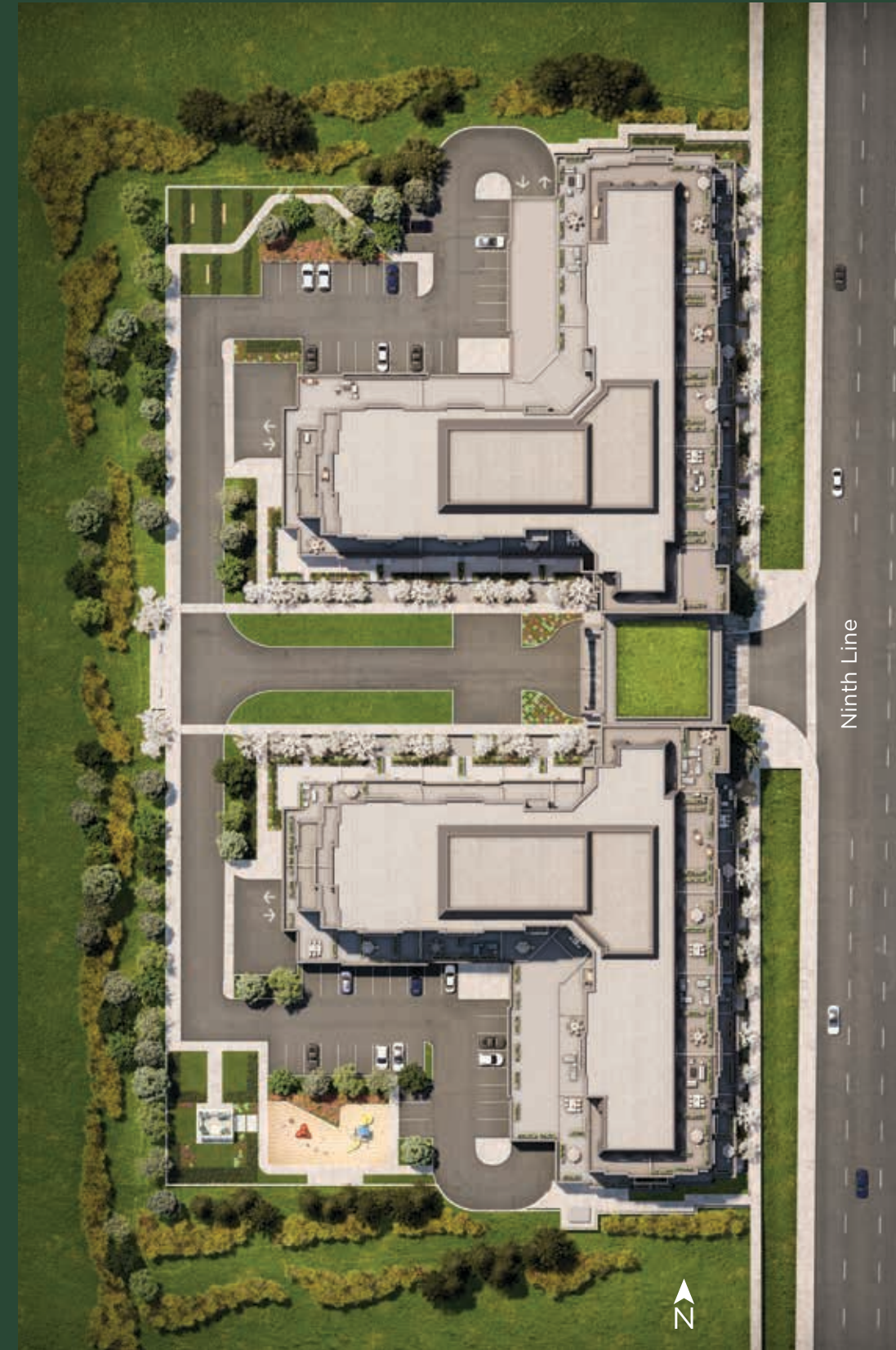


THIRD FLOOR AMENITIES



- 1. Outdoor Terrace & BBQ
- 2. Party Room
- 3. Catering Kitchen
- 4. Billiards/Game Room
- 5. Fitness Centre
- 6. Yoga Studio
- 7. Men's Change Room & Steam Room
- 8. Men's Washroom
- 9. Woman's Change Room & Steam Room
- 10. Women's Washroom

SITE PLAN





OUTDOOR TERRACE



PARTY ROOM



PARTY ROOM







LOBBY

MAKE A LASTING FIRST IMPRESSION.

At 9th & Main, a stunning lobby welcomes you home and greets guests with opulence. From stylish carpets and seating to beautiful tables and chandeliers, every detail is a work of art on its own. Together, each element fuses to create a luxurious ambiance.



COMFORT & STYLE

The suites at 9th & Main offer an unprecedented balance of supreme comfort and impeccable style. Featuring only the highest quality materials and brilliant design, every area is optimized to offer the best use of space. Thoughtful layouts and carefully selected elements provide the entire community with a truly astounding ambiance.







MASTER BEDROOM





The Town of Whitchurch-Stouffville is the best of both worlds. Located within the York Region of the Greater Toronto and Hamilton Area, it features quick access to transit routes, entertainment, shopping, and dining. It is the third fastest growing community in Canada, with the Oak Ridges Moraine covering approximately 80% of the area. While transforming into a hub of modern living, this special community has managed to retain its traditional, rural roots. Enjoy all the urban amenities of city life, as well as the tranquility of sprawling nature.

TOWN & CITY

SHOPPING

1. Canadian Tire — 5 min
2. CF Markville Mall — 18 min
3. Costco Wholesale — 19 min
4. First Markham Place — 20 min
5. Giant Tiger — 4 min
6. Global Pet Foods — 4 min
7. LCBO — 4 min
8. Mark's Work Warehouse — 6 min
9. Metro — 3 min
10. No Frills — 2 min
11. Pet Value — 3 min
12. RBC Bank — 5 min
13. Reesor Farm Market — 2 min
14. Service Ontario — 4 min
15. Shell Gas Station — 3 min
16. Shoppers Drug Mart — 4 min
17. SmartCentres Stouffville — 3 min
18. Sport Chek Stouffville — 5 min
19. The Beer Store — 3 min
20. The Home Depot — 9 min
21. TD Canada Trust — 4 min
22. Winners — 5 min
23. Wal-Mart Stouffville Superstore — 5 min

DINING

24. Baskin Robbins — 4 min
25. Boston Pizza — 4 min
26. Earl of Whitchurch — 3 min
27. Fishbone By The Lake — 11 min
28. India 360 — 4 min
29. Main Street Bakehouse — 3 min
30. Main Street Burger Shoppe — 2 min
31. Maki Zushi — 4 min
32. Red Bulb Espresso Bar — 3 min
33. Sgt. Peppers Pub & Grill — 4 min
34. Stakeout Dining Room & Lounge — 4 min
35. Symposium Café Restaurant & Lounge — 3 min
36. The King's Landing Bar & Grill — 4 min
37. Tim Horton's — 3 min

RECREATION & FITNESS

38. Anytime Fitness — 6 min
39. CrossFit Crux — 3 min
40. Fight Fit Bootcamps — 3 min
41. KIND Yoga by Heart — 2 min
42. Laugh Out Loud Kids Indoor Playground — 3 min
43. Markham Pan Am Centre — 16 min
44. Sheffield Judo Club — 3 min
45. Snap Fitness — 2 min
46. SoccerCity - Stouffville — 3 min
47. Stouffville Arena — 3 min
48. Stouffville Academy of Music & Dance — 6 min
49. Stouffville Clippers Sport Complex — 9 min
50. Stouffville Lawn Bowling Club — 5 min
51. Stouffville Yoga Life — 4 min
52. Whitchurch-Stouffville Leisure Centre — 4 min
53. York Dance Academy — 3 min

EDUCATION

54. École Catholique Pape-François — 2 min
55. Glad Park Public School — 4 min
56. Harry Bowes Public School — 6 min
57. Harry Bowes Upper Canada Child Care — 6 min
58. Kumon Math & Reading Centre — 5 min
59. Markham District High School — 11 min
60. MindTech Montessori Schools — 4 min
61. Oscar Peterson Public School — 2 min
62. Oxford Learning Stouffville — 3 min
63. Royal Cachet Montessori School — 2 min
64. St. Brigid Catholic Elementary School — 5 min
65. St. Brendan — 4 min
66. Stouffville District Secondary School — 1 min
67. Stouffville Village Child Care — 5 min
68. Summitview Public School — 5 min
69. Tiny Bubbles Childcare — 3 min
70. Wendat Village Public School — 3 min
71. Whitchurch-Stouffville Public Library — 2 min

ARTS & CULTURE

72. Lebovic Centre for Arts & Entertainment Nineteen on the Park — 5 min
73. Markham Museum — 10 min
74. The Latcham Gallery — 4 min
75. Varley Art Gallery of Markham — 17 min
76. Whitchurch Stouffville Strawberry Festival — 4 min

PARKS & GREENSPACE

77. Baker Hill Parkette — 6 min
78. Bethesda Park — 6 min
79. Bruce's Mill Conservation Area — 12 min
80. Coultice Park — 11 min
81. Greenwood Parkette — 6 min
82. Musselman Lake — 12 min
83. Rouge Park — 5 min
84. Rougeview Dog Park — 6 min
85. Whelers Mill Park — 2 min
86. Woodland Trails — 5 min

GOLF COURSES

87. Angus Glen Golf Club — 12 min
88. Bethesda Grange Golf Course — 13 min
89. Bushwood Golf Club — 6 min
90. Emerald Hills Golf Club — 16 min
91. Granite Golf Club — 8 min
92. Maples of Ballantrae Golf Club — 10 min
93. Sleepy Hollow Golf & Country Club — 10 min
94. Spring Lakes Golf Club — 7 min
95. St. Andrew's East Golf & Country Club — 13 min
96. Station Creek Golf Club — 15 min
97. Timber Creek Golf — 4 min

HEALTH CARE

98. Fusion Physiotherapy & Wellness Centre — 5 min
99. Park Drive Dental Centre — 4 min
100. Stouffville Joint Venture Physiotherapy — 5 min

TRANSPORTATION

101. Stouffville GO Transit Station — 3 min
102. Highway 404 — 14 min
103. Highway 407 — 9 min

EMERGENCY SERVICES

104. Markham Stouffville Hospital — 9 min
105. Whitchurch Stouffville Fire & Emergency Services — 3 min

HWY 404



HWY 407



THAT FRESH STOUFFVILLE AIR

Go for Green

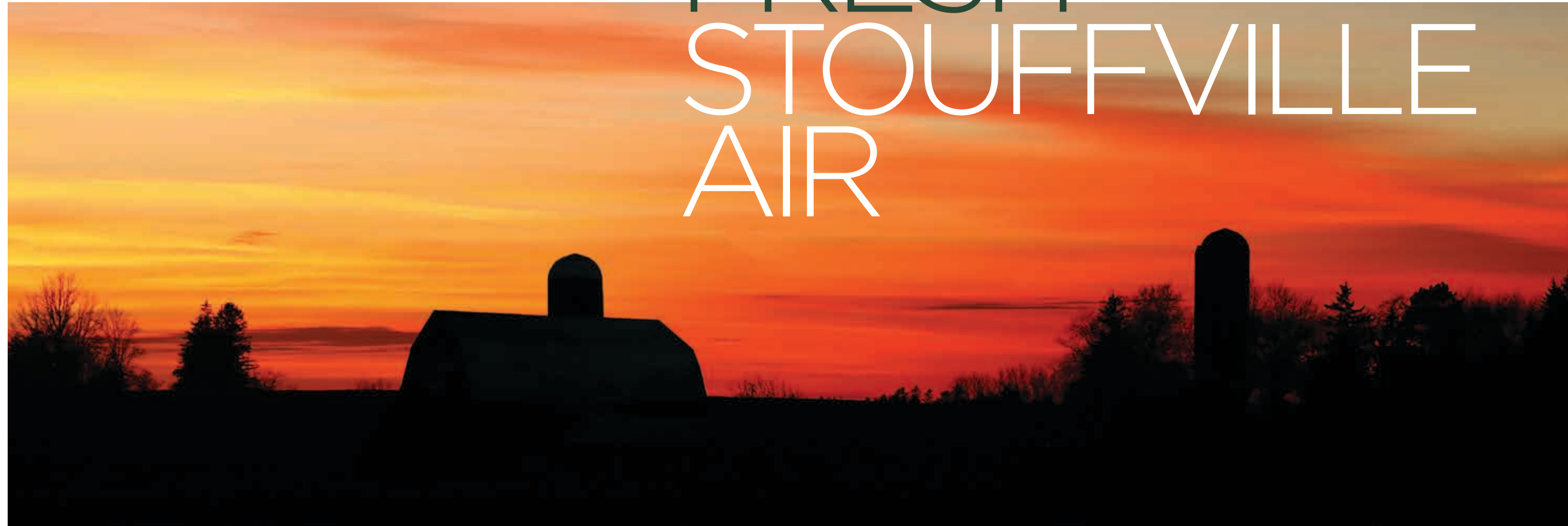
- Bruce's Mill Conservation Area **12 minutes**
- Musselman's Lake **12 minutes**
- Sunnyridge Park **5 minutes**

In Full Swing

- Angus Glen Golf Club **12 minutes**
- Spring Lakes Golf Club **7 minutes**
- Station Creek Golf Club **15 minutes**

All Sorts of Sports

- Stouffville Clippers Sports Complex **9 minutes**
- SoccerCity **3 minutes**
- Whitchurch-Stouffville Leisure Centre ... **7 minutes**



Explore lush landscapes, Musselman's lake, fun parks, community gardens, outdoor recreation, golf clubs, equestrian centres, and more. Rupert Park is a top choice for families, featuring a playground, picnic area, toboggan hill, baseball diamond, skating rink, and basketball court. Feeling fit? Visit Sunnyridge Park to use the outdoor fitness equipment and help yourself to a fresh apple or pear, organically grown as part of Stouffville's Edible Tree Program.





The Journey

Stouffville GO Transit Station **3 minutes**
 Highway 404 **14 minutes**
 Highway 407 **9 minutes**

The Destination

Billy Bishop Airport **90 minutes**
 Pearson Airport **45 minutes**
 Union Station **60 minutes**

Commuting Made Easy.

Although everything you could need is right here in Stouffville, it's easy to branch out across the GTA. Take advantage of easy access to the Stouffville GO Station, highways 407 and 404, buses 15, 70, and 71, and more. Drive, ride, and walk your way throughout the neighbourhood and beyond.



A CONNECTED WAY OF LIFE

SHOP, EAT

REPEAT

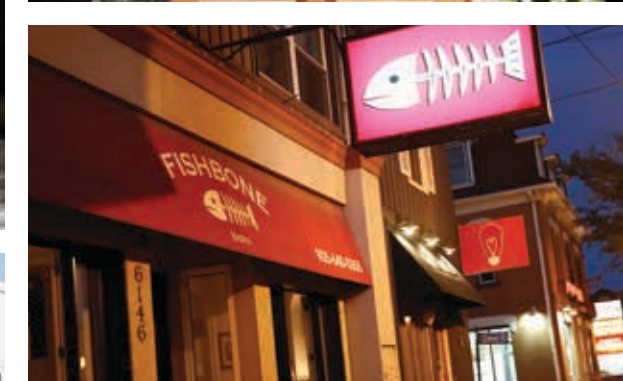


Convenient Shopping

- CF Markville Mall 18 minutes
- Costco Wholesale 19 minutes
- First Markham Place 20 minutes
- Shoppers Drug Mart 4 minutes
- Metro 3 minutes
- Wal Mart Superstore 5 minutes

Indulgent Dining

- Fishbone by the Lake 11 minutes
- Maki Sushi 4 minutes
- Red Bulb Espresso Bar 3 minutes
- The King's Landing Bar & Grill 4 minutes



Convenience and indulgence is always just around the corner. Enjoy unique dishes with immense flavour at Fishbone Bistro, or pick up everything you need at the nearby Metro and make culinary creations in your own chef-inspired kitchen. Shop until you drop at the nearby mall, or browse boutiques along Main Street. There's always something fun to do in Stouffville.





Stouffville is a neighbourhood brimming with art, sports, leisure, and recreation. Its renowned Strawberry Festival is not to be missed and the farmers' markets draw crowds from across the GTA. The recently expanded Leisure Centre includes a wonderful library, fitness centre, indoor pool, gymnasium, and the Latcham Gallery, Stouffville's free public art gallery. The Lebovic Centre for Arts & Entertainment hosts comedy shows, concerts, exhibits, theatre, film screenings, dance performances, and more.



Simple Pleasures

- Lebovic Centre for Arts & Entertainment ...**5 minutes**
- Markham Museum **10 minutes**
- The Latcham Gallery **4 minutes**
- Varley Art Gallery of Markham **17 minutes**
- Whitchurch-Stouffville Strawberry Festival... **4 minutes**



YOUR CULTURED COMMUNITY



Pemberton

Trust isn't given. It's built over decades. Pemberton Group has been creating successful residential and commercial developments in many of the Greater Toronto Area's best locations. Each Pemberton condominium community is built to the highest standard with meticulous attention to detail, cutting-edge recreational facilities, superb customer service, and lasting value. A Pemberton condominium stands apart from the crowd. Residents enjoy design creativity and top craftsmanship, and are surrounded by quality features and outstanding amenities. At present, Pemberton Group has several prestigious condominiums in various stages of development across the Greater Toronto Area, including Downtown Toronto, Yonge & Eglinton, Mississauga, Maple, and Richmond Hill.

pembertongroup.com



Bluwater Condos, Oakville



Neon Townhomes, Toronto



U Condominiums, Toronto



The Urban Townhome Collection, Toronto

Pemberton



CONDOR[™]
PROPERTIES LTD.